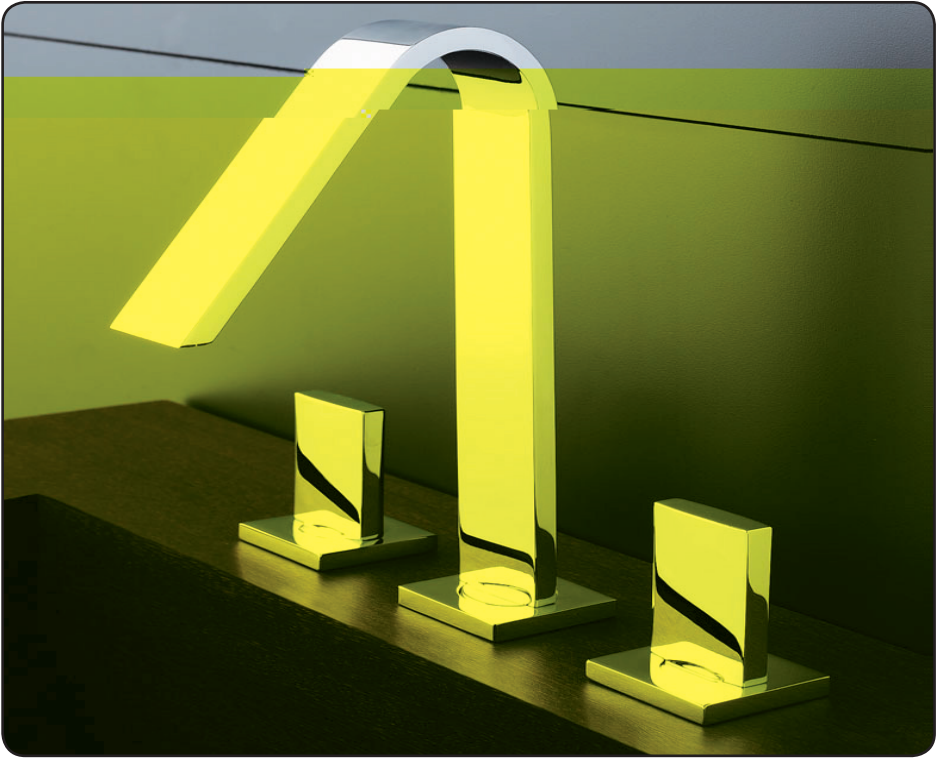


ASPIRANTE

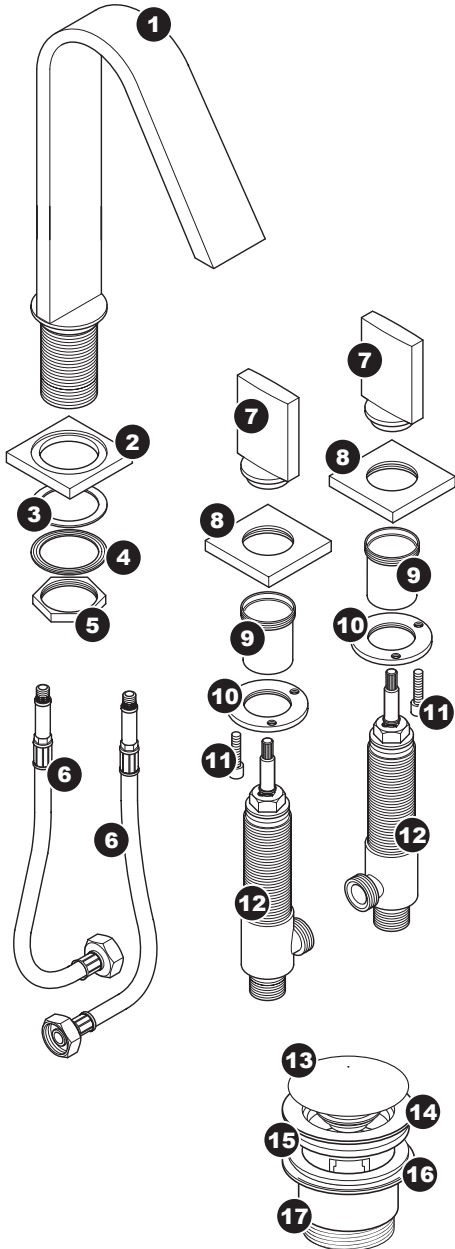
ARCHETTO *3-hole basin tap*



Installation and Operating Instructions

INSTALLERS PLEASE NOTE THESE INSTRUCTIONS ARE TO LEFT WITH THE USER

Fig.1



INTRODUCTION

This guide contains all the necessary fitting instructions for your Aspirante Archetto 3-hole basin tap.

Note: The Archetto basin tap is suitable for use with 3-hole style basins only.

Please read this guide carefully before beginning your installation.

The tap installation must be carried out by a suitably competent person and in the sequence specified in these instructions.

Care taken during the installation will provide a long life and trouble free operation from your tap.

DO NOT choose a position where the tap could become frozen.

COMPONENTS (fig.1)

The tap set comprises the following items:

1. Tap spout
2. Tap base
3. 'O' ring
4. Silicon washer
5. Locknut
6. Flexible hose
7. Tap assembly
8. Retaining collar
9. Adjusting screws
10. Handle collar
11. Tap base
12. Handle
13. Plunger
14. Upper waste unit
15. Upper silicon seal
16. Lower silicon seal
17. Lower waste unit

Check that all parts are correct.

SITE REQUIREMENTS

WARNING!

The mixer must not be positioned where it will be subject to freezing conditions.

This tap is suitable for high water pressures only and should be fitted in accordance with Water Regulations.

Running pressure — 1.0 bar to 5 bar.

Static pressure — 10 bar

Maximum temperature — 85°C.

Recommended temperature — 60 to 65°C.

Note: For the ideal flow pattern from the mixer, a maximum running pressure of 3 bar is recommended.

INSTALLATION

Fitting the spout

Fit the tap base over the threaded tube at the base of the spout (**fig.2**). Insert the 'O' ring into the recess in the underside of the tap base (**fig.2**).

Fit the spout into the central pre-cut hole in the basin. Make sure the tap base and 'O' ring correctly locate with the base of the spout.

From the underside of the basin, slide the silicon washer, metal washer and locknut onto the threaded tube (**fig.3**). Align the spout and base and with the central pre-cut hole. Tighten the brass locknut fully to secure the spout in position.

Screw the flexible hoses into the two openings in the spout base and tighten (**fig.4**).

Fitting the taps

Note: The fitting procedure is identical for each tap.

Screw the retaining collar onto the threaded section of the tap assembly, making sure to screw it down to the bottom of the thread. Screw three adjusting screws into the underside of the retaining collar.

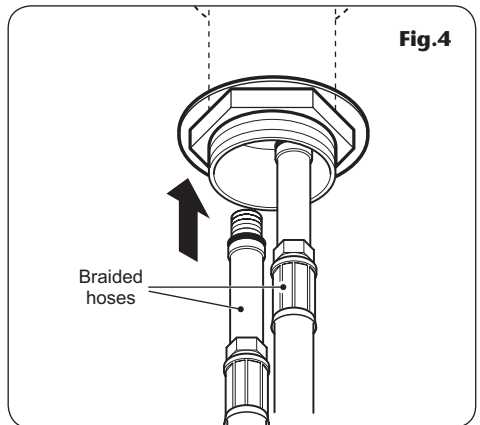
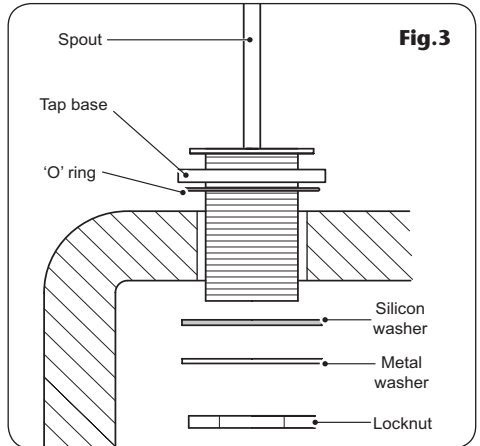
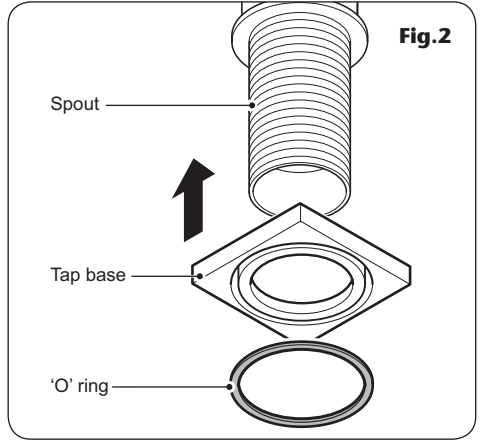
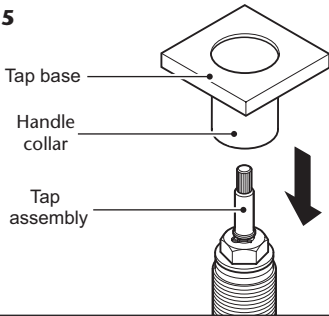


Fig.5



Insert the 'O' ring into the recess in the underside of the tap base. Screw the tap base to the handle collar (**fig.5**).

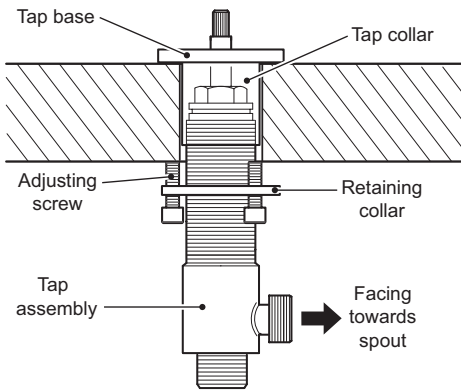
From the underside of the basin, insert the tap assembly into the pre-cut hole in the basin.

From the top of the basin, screw the tap base and collar onto the tap assembly and tighten. Align the tap and base so that the tap outlet faces towards the spout (**fig.6**).

Tighten the locking nut to hold loosely the tap assembly in place. Using a suitable Allen key, tighten the three retaining screws to secure the tap assembly to the basin (**fig.6**).

Push fit the handle onto the tap assembly spline. Repeat for the remaining tap assembly.

Fig.6



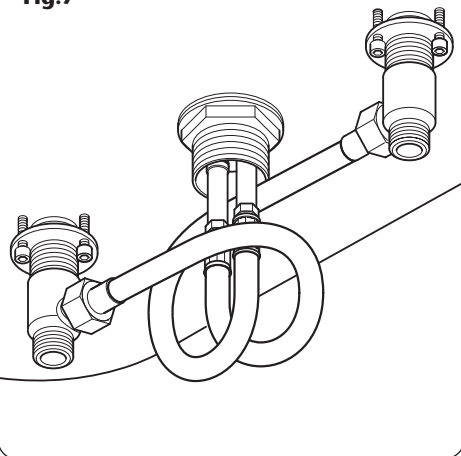
Connecting the hoses

Connect the steel braided hose on left-hand side to the left-hand (HOT) tap assembly and tighten securely.

Connect the steel braided hose on right-hand side to the right-hand (COLD) tap assembly and tighten securely.

Connect the hot water pipe to the left-hand tap and the cold water pipe to the right-hand tap (**fig.7**).

Fig.7



Fitting the waste unit

Remove the plunger from the waste unit. Take the waste assembly apart, as shown in **fig.8**.

Slide the upper silicon seal onto the upper waste outlet and fit the lower silicon seal onto the recess in the lower waste outlet. Note the facing of the lower silicon seal should be rounded face down.

Place the upper waste fitting into the basin drainage hole. Screw the lower waste outlet into the upper waste outlet (**fig.9**). Fully tighten the lower waste unit onto the upper waste unit. Screw the plunger into the waste assembly.

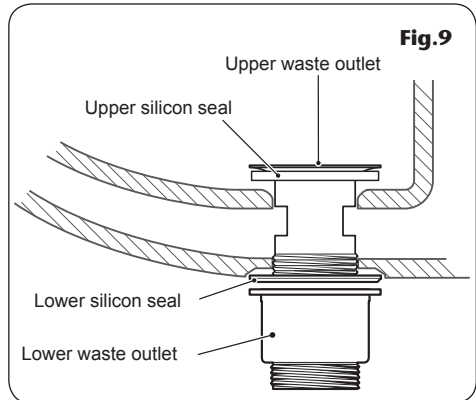
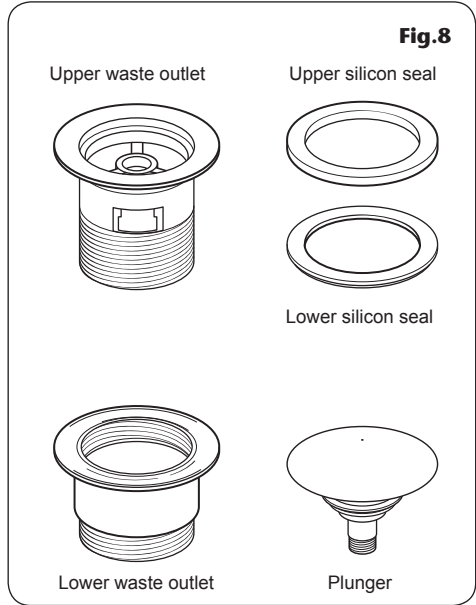
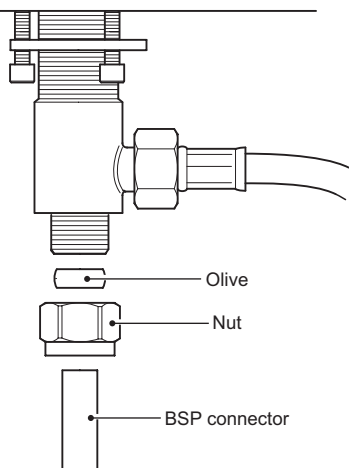


Fig.10



FINISHING THE INSTALLATION

IMPORTANT: Before completing the connection of the water supply to the taps, flush out the system to remove any debris in the pipework. This can be done by connecting a hose to the pipework and turning on the mains water supply long enough to clear the debris to waste.

Use a standard $\frac{1}{2}$ " BSP nut and olive to connect the incoming COLD supply pipework to the right-hand inlet (**fig.10**).

Again, using a standard $\frac{1}{2}$ " BSP nut and olive, connect the incoming HOT supply pipework to the left-hand inlet.

OPERATION

Rotating the tap handles controls the flow and temperature.

The right-hand tap controls the cold water and the left-hand tap controls the hot water.

To turn the taps on, rotate anti-clockwise. To turn the taps off, rotate clockwise.

The waste gate has a push-on, push-off operation. To close the waste gate, push the plunger down so that it locks into place in the waste assembly. To open the gate, push down on the plunger and release — the plunger will pop back up.

CLEANING

WARNING!

DO NOT use 'powerful' abrasive or solvent cleaning fluids when cleaning the shower as they may damage the fittings.

IMPORTANT: DO NOT use abrasive or solvent cleaning fluids. The mixer unit should be cleaned using a soft cloth and warm water. Any stains should be removed using washing up liquid.

SPARE PARTS

Ref. Description

Part No.

-
- 3-hole bath filler (complete) ASPARCTP3HBAF



*A **MORCROS** Company*

Triton Plc
Triton Road
Nuneaton
Warwickshire CV11 4NP