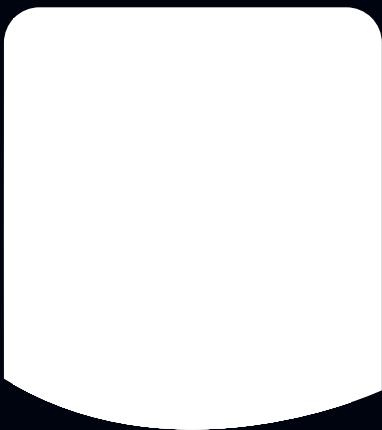


Step-by-step installation guide

Offering excellent performance, practicality and styling, a Satellites shower is quicker and easier to install than most mixer showers.

It has been designed to allow the mixing unit and the remote control panel to be located independently of each other up to 10 metres apart. It can be installed into a pre-tiled bathroom as the remote control and shower kit simply screw onto the tiles.

There are two options; a "through the wall" installation, where the mixer unit is located in an airing cupboard, or a "through the ceiling" installation, where the mixer unit is fitted in the loft.



INSTALLING THE SHOWER KIT

To install the "through the ceiling" kit simply;

Screw the top bracket to the wall.

Mark out the entry point in the ceiling and drill a hole.

Cut the rail to length, slip on the chrome ceiling trim and slot the rail into the top bracket.

Place the lower section of the rail into the top bracket and fit the bottom bracket

Feed the supplied flexible pipe down through the riser rail.

Fit the push-fit connector to the flexible pipe and secure the connector into the bottom bracket

Fit the bracket trims to complete the riser rail installation.

FITTING THE MIXER UNIT

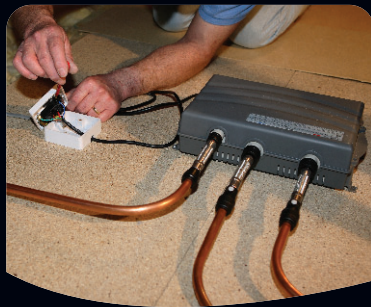
The Satellites range offers two mixing units, one for systems below 1 bar pressure and one for systems above 1 bar pressure.



Before connecting the water supplies to the mixer, fit the supplied push fit flexible connectors onto the inlet and outlet pipes.

Using the integral isolating valves, flush out the hot and cold supplies.

Secure the mixer unit in place and simply screw the flexible connectors onto the unit.



Connect the outlet from the mixing unit to the flexible pipe in the riser rail using the supplied push-fit elbow

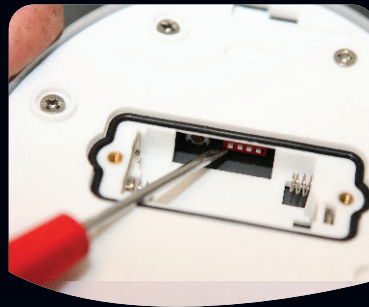


Wire the mixing unit cable into a 3amp fuse spur box.

To complete the mixer unit installation, lag all pipework to prevent freezing.



FITTING THE REMOTE CONTROL



Before fitting the remote control panel onto the wall, select the desired settings in the back of the unit.

The first is a timer setting, which allows the shower to be set so that it switches off after 10 minutes.



The second sets the maximum temperature, which the unit will not exceed - 41°C or 47°C

The third allows you to reduce water consumption by selecting the economy flow setting.

Fit the two AAA batteries and select a location for the control panel.



Screw the mounting bracket onto the wall and clip on and secure the remote control panel.

Power-up the mixing unit and register the remote control to it. The shower is then ready to use.