

The Pyronix *Belle* External Sounder



Description	Specification	Index
-------------	---------------	-------



The external sounder is no doubt the most visible and audible component of your security system. It is therefore essential that your sounder is capable of attracting attention should you have an alarm activation.

The Belle provides both a visible and audible deterrent.

When activated the Belle has a panoramic strobe effect which totally illuminates the full casing of the bellbox. At the same time a siren output of 118 decibels at 1 metre can be heard. (The siren will cut off after 15 minutes in line with forthcoming European legislation).

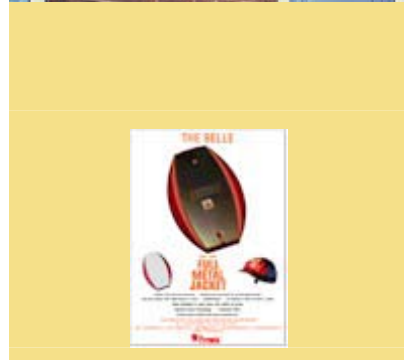
Stringent tamper features ensure that any sabotage attempts such as removing the lid, pulling the Belle from the wall, or cutting the power supply, will result in an alarm activation (the siren will activate independently of the control panel in a tamper situation).

The Belle is manufactured at Pyronix using state of the art technology which ensures consistently high quality and excellent reliability. The base is constructed from a dual skin of 3mm polished transparent Polycarbonate and together with the translucent lid the casing of the Belle is both durable and aesthetically pleasing.



The option of a steel shroud is available for premises where the bell box may be more vulnerable or mounted lower on the property.

The Belle comes complete with a back up battery so that even in the event of a power cut to the Belle you can rest assured that the sounder is still operating and protecting your property.





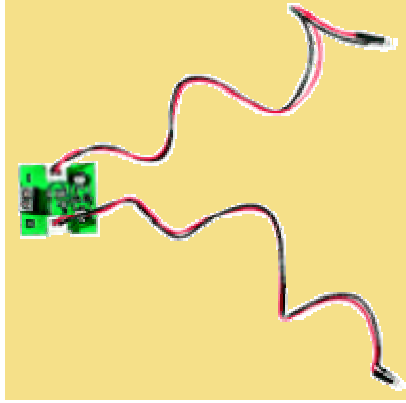
What's New!
NOW WITH FULL METAL JACKET

Due to popular demand,
Pyronix has designed and manufactured
a steel shroud for the Belle external sounder

The Pyronix
Belle
External Sounder



Description	Specification	Index
	<p>External sounder Panoramic strobe effect illuminating the full Bellbox. Easy mounting and connections reduces installation time, covers can be removed and re-attached elsewhere on the Belle. Twin piezo sounders, with 118 dBa output at 1 metre. Stand-by cut off timer set at 15 minutes. Surface mount technology. Service friendly due to modular plug on / off replacements Conformally coated electronics. Integrated strobe 3 way tamper action; back, front and cut of power supply. Negative and positive triggering inputs. SAB / SCB option Standby indication by alternate flashing LED's. Dual skin 3mm transparent Polycarbonate enclosure. Transparent case and translucent lid. Optional metal shroud. Printing options available with large screening area. Lid available in red, blue, yellow and white. Base available in red, blue, amber, clear or green. 1 Year Manufacturers Warranty.</p>	
METAL SHROUD		
	<p>1.5 mm carbon steel shroud Galvanised steel coated with anti-corrosive yellow passivate Brackets and screws supplied 1 year manufacturers warranty</p>	
FLASHING LED MODULE		



12V Independent flashing LED
unit
LED's can be mounted
horizontally or vertically