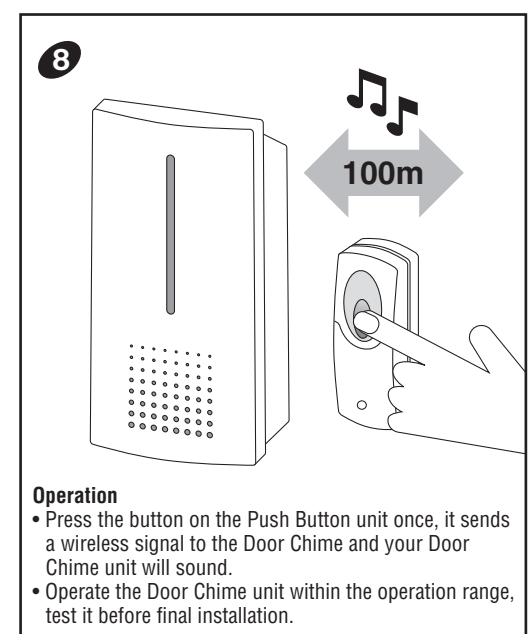
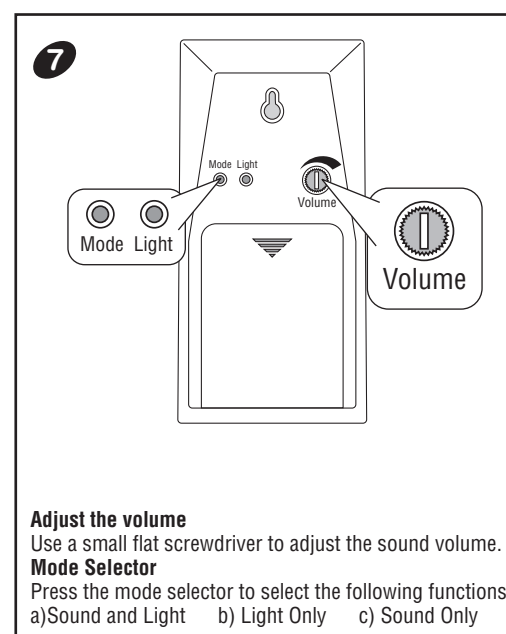
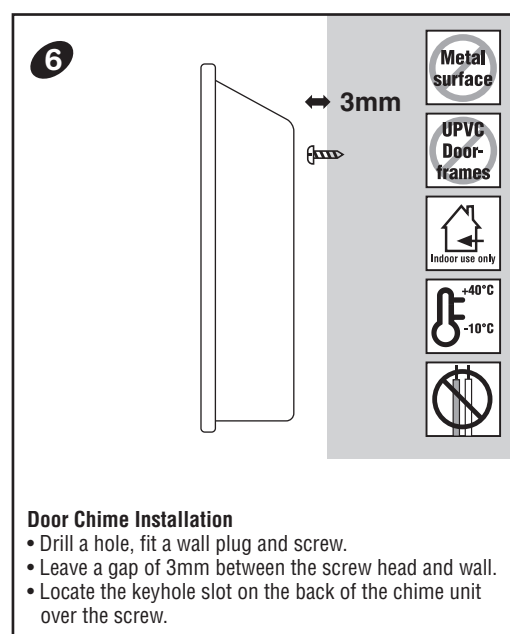
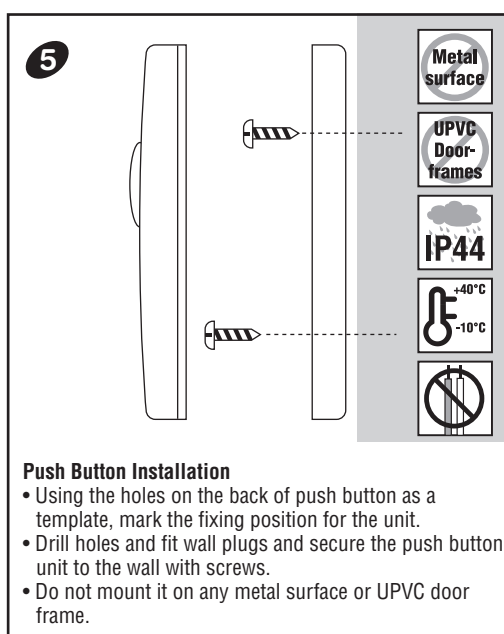
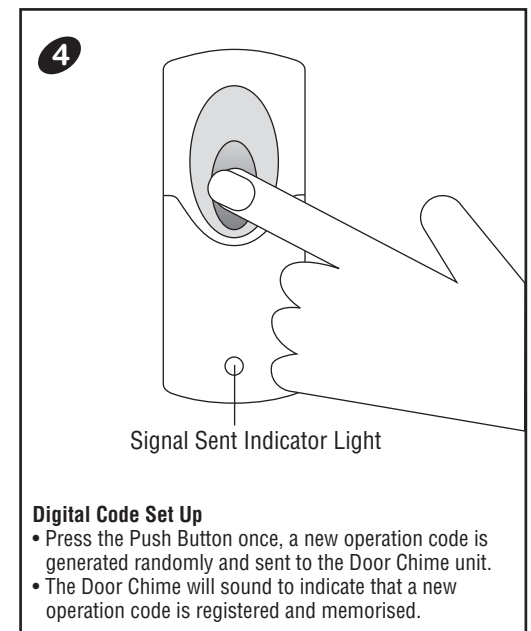
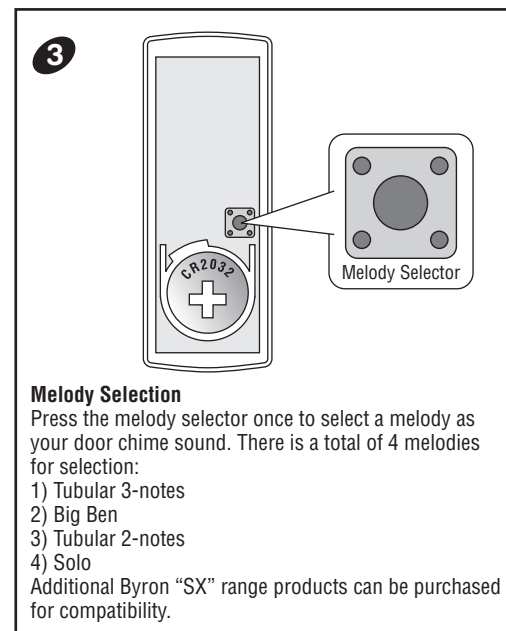
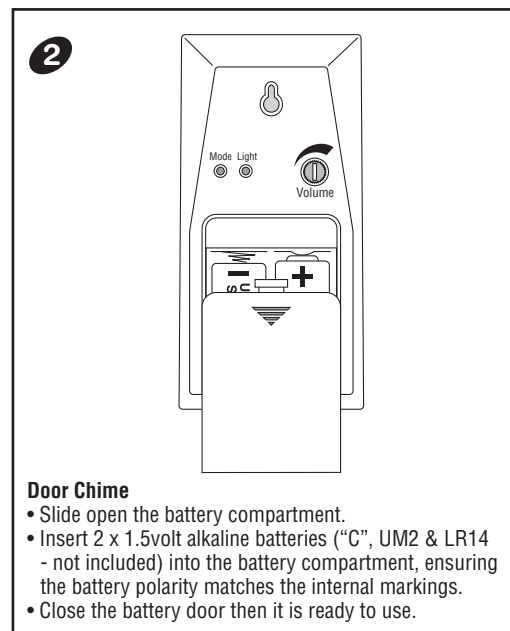
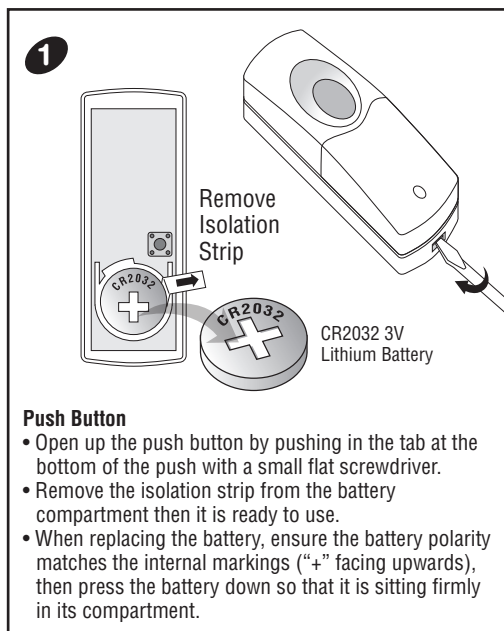


Wireless Door Chime Kit with flashing light

SX-21



Wireless Door Chime Kit with flashing light

SX-21

Push Button unit

Power: 1 x 3volt Lithium battery (CR2032 - included)

Door Chime unit

Power: 2 x 1.5volt alkaline batteries ("C", UM2 & R14 - not included)

Melody Selection

There are 4-melodies for selection -

- Tubular 3-notes
- Big Ben
- Tubular 2-notes
- Solo

Additional Byron "SX" range products can be purchased for compatibility.

Digital Code Set Up

The Door Chime kit is equipped with an advanced random and self-learning operation coding ability therefore no setting is needed. Read the following instructions before use.

1. First time operation:

After battery installation on the Push Button and Door Chime units, press the Push Button once and it will generate a new operation code randomly and send a wireless signal to the Door Chime unit. The door chime unit will sound to indicate that new operation code is registered and memorised.

2. Interference from a similar unit operating nearby:

- Simply remove the batteries from the Push Button and Door Chime units and rest for 10 seconds, this will erase the memory.
- Insert the batteries into the Push Button and the Door Chime units, the door chime unit will give 2-beeps to indicate that it is ready for the new code registration. Press the Push Button once, it will generate a new operation code randomly and send a wireless signal to the Door Chime and it will sound to indicate that new operation code is registered and memorised.

3. Front and back door Bell Push operation:

- Remove the batteries from the Push Buttons (Front & Back Door) and Door Chime units and rest for 10 seconds, it will erase the memory.
- Insert the batteries into the Push Buttons and Door Chime units; the door chime unit will give 2-beeps to indicate that it is ready for the new code registration.
- Press the front door Push Button once, it will generate a new operation code randomly and send a wireless signal to the door chime unit and it will sound to indicate that a new operation code is registered and memorised.
- After, (within 2 minutes) press the back door Push Button once, it will generate a new operation code randomly and send a wireless signal to the door chime unit and it will sound to indicate that new operation code is registered and memorised. The door chime unit has the ability to memorise both operation codes.
- Test to ensure correct operation before final installation.

Door Chime Operation

The function (Mode) selector is located at the back of the unit; press the button to select one of the following functions to operate the chime unit accordingly:

- Sound and Light: The Door chime will sound as well as the Super Bright LED Light will flash to maximizing attention
 - Light Only: The Super Bright LED Light on the Door Chime unit will flash
 - Sound Only: Door Chime unit will sound
- The door chime will start operate at "Sound Only" function initially.
For repeat sound, press the button again. Holding the button in will **NOT** repeat the sound.

Flashing Light Pattern

When (a) Sound + Light **OR** (b) Light Only mode is selected, press the flashing light pattern button "Light" at the back of the chime unit to select the operation in the following pattern:

1) Sound + Light mode - When the door chime sound, it will flash in following pattern:

- Slow flashing for 5 seconds
- Fast flashing for 5 seconds
- Flashing intermittent, 2 seconds "On", 1 second "Off" and 2 seconds "On" again

2) Light Only mode - The door chime will flash in following pattern without the chime sound:

- Slow flashing for 10 seconds
- Fast flashing for 10 seconds
- Flashing intermittent, 2 seconds "On", 1 second "Off" and 2 seconds "On" again for 2 times.

Important

- Do not mount either unit close to fireplace or expose to high temperatures.
- Do not expose the Door Chime unit to direct sunlight or moisture
- Always use alkaline battery. Please dispose of old, defective batteries in an environmentally friendly manner in accordance with the relevant legislation.
- Make sure that no naked flame sources, such as lighted candles, should be placed on the unit.
- The unit should not be exposed to dripping or splashing and no objects filled with liquids, such as vases, should be placed on the unit.
- CAUTION:** Replace only with the same or equivalent type of battery that is recommended by the manufacturer.
- CAUTION:** Make sure batteries are installed correctly as per the internal markings.
- CAUTION:** Danger of explosion if battery is incorrectly installed or replaced.
- IMPORTANT:** There are no serviceable parts in the units, do not attempt to repair it.

User Hints

If the door chime unit does not sound, please check the following:

- Flat batteries in either Push Button or Door Chime units - change the batteries.
- Wrong battery polarity in either Push Button or Door Chime units - re-insert the batteries.
- Push Button and Door Chime units are not on the same operation codes - re-set the code (see digital code set up).
- Units are out of range - Operate the Chime unit within the operation range.

Specification

Operating Temperature: -10C +40C

Operating Distance: 100metre (330ft approx. - in open field & at suitable condition)

Selectable Tone: Total Four (4) melodies available

Selectable Digital Code: Total two hundred fifty six (256) possible digital codes

"Type R2 Device - device where the sound output is created by the initial operation of the control and where the period of sound output continues for the designed duration irrespective of condition of the control."

CH Byron Electrical Ltd
Byron House
34 Sherwood Rd, Astonfield
Bromsgrove, B60 3DR
UK
Tel: 0845 2301231
e: support@chbyron.com
w: www.chbyron.com

