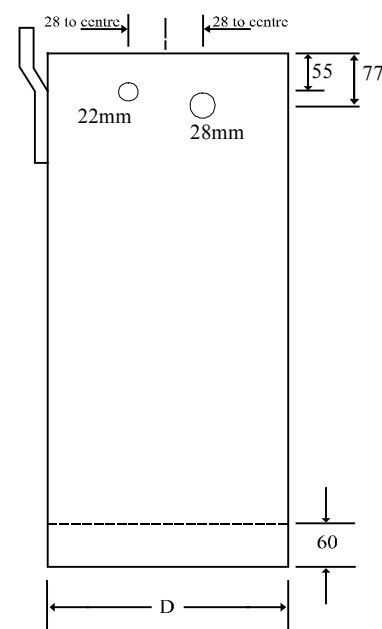
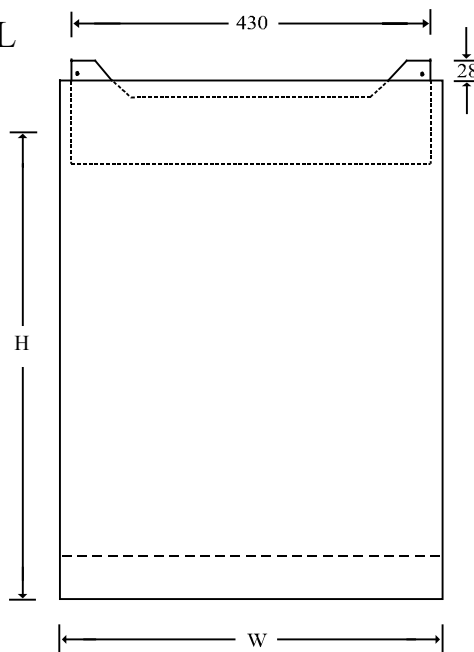


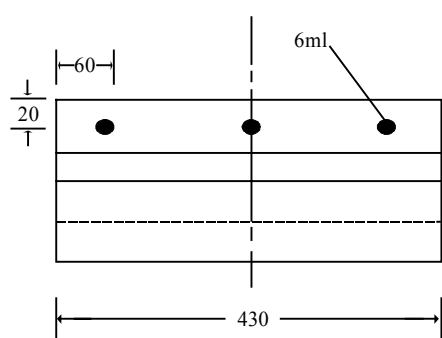
AP25L, AP50L, AP75L, AP100L Rectangular Combination Tank INSTALLATION AND OPERATING INSTRUCTIONS



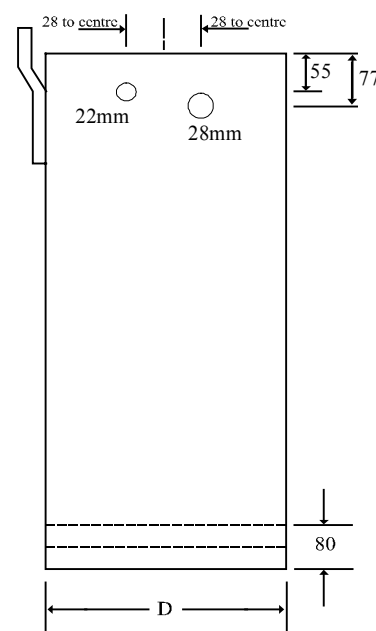
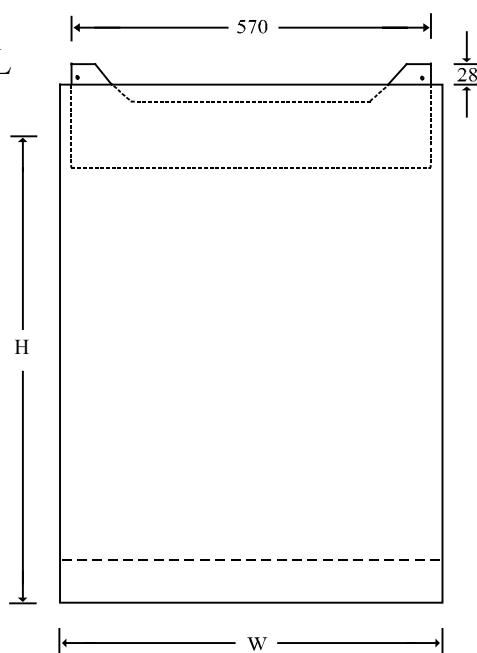
Dimensions AP25L



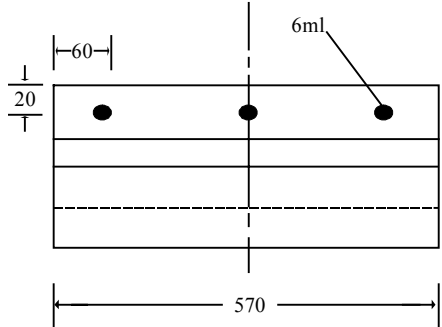
Mounting Bracket - AP25L



Dimensions AP50/75/100L



Mounting Bracket -
AP50/75/100L



Model	Hot Capacity Litres	Cold Capacity Litres	Height mm	Width mm	Depth mm	Weight Kg (full)
AP25L	25	8	705	470	210	51.5
AP50L	50	25	750	600	320	88.0
AP75L	75	25	920	600	320	119.5
AP100L	100	25	1080	600	320	148.0

2. Technical Specification

Brazed rectangular tank with zinc free brazing alloy.
Insulation: Urethane semi rigid slabs CFC free.
Outer case: Mild steel coated.
Units water tested prior to final assembly.

Tappings

Hot draw off 22mm compression
Drain - $\frac{1}{2}$ " female boss
Immersion - $2\frac{1}{4}$ " boss

Components

11" Electric Incaloy immersion heater
Rating 240V/3kW
Ball float arrangements to BS 1212 part 1
Byelaw 30 kit
Drain tap from DZR

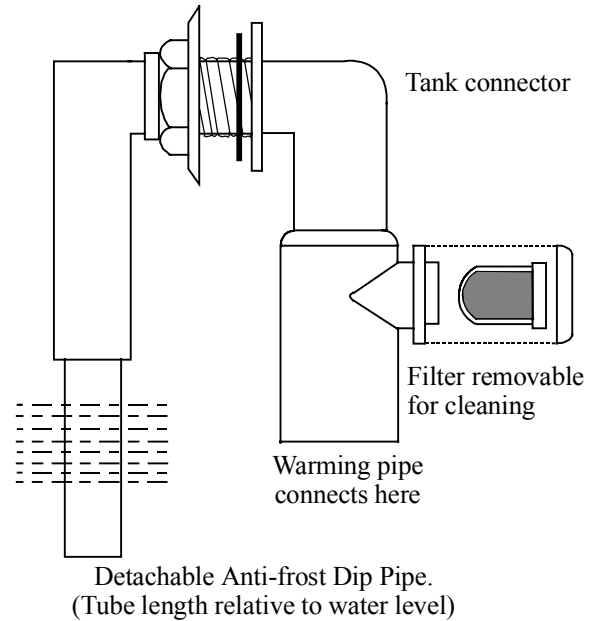
Manufactured at site(s) registered to BS EN ISO 9002: 1994
Manufactured in accordance with BS3198
WRC listed product number 9503034
Fitted with aluminium protector rod

Storage unit construction from copper to BS 2870

Copper tube to BS 2871 pt 1 table X

3. Installation instructions

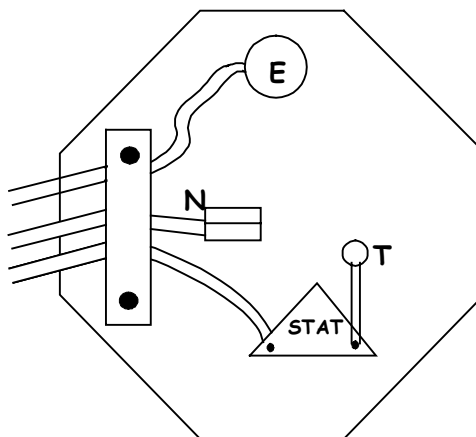
- 3.1 Fix the hanging bracket to the wall using fixings suitable for the full weight of the units (see section one for weights).
- 3.2 Ensure that the unit is hung vertically with cold feed connection points at the top, immersion heater connection and hot water draw off at the bottom.
 - 3.3.1 Connect the cold water mains to the top (cold) section of the unit via the ball float valve (supplied) using the 15mm (smaller) hole punched in the side of the unit. It is recommended that a service valve be fitted to the cold supply to isolate the unit for ease of servicing.



- 3.3.2 Connect the water overflow/warning pipe to the 22mm (larger) hole punched on the side of the unit. A byelaw 30 kit is supplied and should be fitted in accordance with regulations (see right). The top of the unit is pre-punched to accept the breather in this kit.
- 3.3.3 Connect hot water draw off to the bottom 22mm compression fitting.
Note: Hot water terminal fittings must be below the unit.
- 3.3.4 Connect the drain tap (supplied) to the 15mm connection at the base of the unit.
- 3.4 Fit the immersion heater supplied (see section 3.5) and wire in accordance with I.E.E. Regulations. A bonding strip is fitted for electrical earth bonding. This must be carried out.
- 3.5 Immersion heater installation instructions:
1. Check heater rating shows the voltage that conforms with mains supply.
 2. The heater is to be wired using 1.5mm² flexible cable, 85°C rubber insulated HOFR Sheathed, complying with BS8141 Table 8. It must be fully earthed and wired through a double pole insulating switch or controller.
 3. The cable grip is to be positioned in the location hole in the side of the heater head, and the cable securely attached. Wire in accordance with the wiring diagram below.
 4. Use a shaped spanner, rather than stillsons. The use of any sealants on the gasket is not recommended.
 5. Be sure the tank is full before switching on - the heater must not be allowed to operate dry.
 6. **WARNING: THIS APPLIANCE MUST BE EARTHED.**
 7. To comply with BS3456 a double pole switch having contact separation of a least 3mm on all poles should be used when installing this heater:

Wiring Diagram

EARTH (green/yellow)
NEUTRAL (blue)
LIVE (brown)



4. Commissioning Procedure

- 4.1 Open service valve on mains feed.
- 4.2 Unit will fill.
- 4.3 Open hot water tap and draw down full contents x 2 for flushing out, leaving service valve open.
- 4.4 Close hot water tap.
- 4.5 Switch on immersion heater.
- 4.6 Check thermostat setting.

5. Operation and Maintenance

The unit should give years of trouble free operation without maintenance.

If components need to be changed (for example, the immersion heater), always drain down fully and disconnect electrical supply prior to carrying out work.

The unit can be drained by closing the mains service valve and opening a hot tap connected to the unit.

De-scaling of the immersion heater can be carried out by draining the unit and removing the element.

Helpful Hints

1. Water temperature - this is set by the control on the immersion heater. Depending upon the use of the unit, it can be adjusted to suit requirements. The lower the setting the less power consumed.
2. Frost protection - connecting pipes should be insulated in line with current practice. If the unit is installed in premises that are not occupied or exposed to very low temperatures a frost protection thermostat can be located close to the unit and connected to the immersion element following manufacturers instructions.
3. Cleaning - wipe down with mild detergent. Do not use solvents.

[HYCO Manufacturing Ltd](#)

[Units 1&2, Calder Works](#)

[Methley Road, Castleford](#)

[West Yorkshire WF10 1NX](#)

[Tel: 01977 517555](#)

[Fax: 01977 517666](#)