



# *RfExtreme*

## DIGITAL ENVIRO-ADAPTIVE PIR

The *RfExtreme* passive infrared detector from Texecom provides ultra-high false alarm immunity with lightning fast catch performance, however harsh the environment. Combining the quality and reliability Texecom are renowned for with state-of-the-art digital micro-processing, the *RfExtreme* allows maximum flexibility yet remains simple to install.

### Outstanding features include:

- ✓ 200V/m IMMUNITY TO DIGITAL MOBILE PHONES
- ✓ FUZZY LOGIC SIGNAL ANALYSIS
- ✓ DIGITAL TEMPERATURE COMPENSATION
- ✓ NEURAL BASED ENVIRONMENT LEARNING
- ✓ MICROPROCESSOR SURFACE MOUNT TECHNOLOGY (SMT)
- ✓ 70V/m ADVANCED RF PROTECTION UP TO 1GHz
- ✓ FIRST TO ALARM AND LATCH INPUT
- ✓ PATENTED TAMPER-PROOF BRACKETS
- ✓ REMOTE LED DISABLE
- ✓ SEALED OPTICS

Ask your distributor today for the new Texecom full colour Product Guide.

**Texecom**  
[www.texe.com](http://www.texe.com)

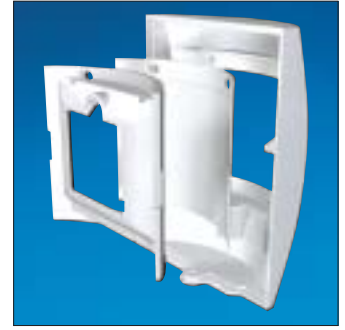
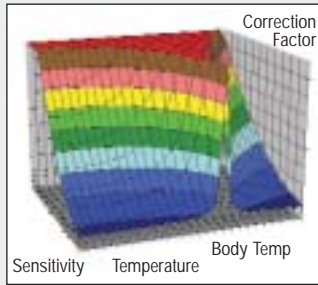
# RF EXTREME FEATURES



Sealed Optics

## Digital Temperature Compensation

The digital temperature compensation technique employed within the *RFExtreme* ensures that the detection criteria most suited to a particular environment are employed. If the environment changes then so do the signal processing algorithms. This technique ensures superb performance even in the hottest of climates.



Interchangeable Lens Library



Patented Tamper-Proof Brackets

## Sealed Optics & Mounting Height Adjustment

The *RFExtreme* contains fully sealed optics, preventing false alarms from insects and drafts. The detector also features an adjustable PCB allowing mounting anywhere between 1.5m and 3.1m.

## Tamper-proof Wall & Ceiling Bracket

Each *RFExtreme* comes complete with patented tamper-proof wall and ceiling brackets. These provide two additional mounting options, enabling precise angle adjustment and ensure simple installation in any location.



First To Alarm/Latch LED Indicator



Corner Fixing Points

## Specifications

<b>Range:</b>	12m (40 feet), 104° volumetric coverage.
<b>Supply Voltage:</b>	9 - 16Vdc
<b>Current Consumption:</b>	10mA typical.
<b>Alarm Output:</b>	Built-in normally closed relay, <24Vdc, 50mA, 18Ω
<b>Dimensions:</b>	90mm x 63mm x 40mm
<b>Packed Weight:</b>	125g (4.5oz) approx.
<b>EMC:</b>	Independently certified to EN50130-4 : 1996
<b>Design:</b>	Noise reduction circuits with maximum ground plane.
<b>RF Immunity:</b>	No false alarms from 80MHz to 1GHz at 70V/m.



Cable Channel Guide

## European Standards

Conforms to European Union (EU) Electro-Magnetic Compatibility (EMC) Directive 89/336/EEC (amended by 92/31/EEC and 93/68/EEC).

Approved to BS EN 55022 Class B and BS EN 50130-4 : 1996.

The CE mark indicates that this product complies with the European requirements for safety, health, environmental and customer protection.

# RF SERIES

## RF650



Ultra immune PIR with digital pulse count. Advanced circuit design ensures false alarm immunity from RF, lightning & mobile phones.

## RFExtreme



Microprocessor based PIR with digital temperature compensation. Excellent catch performance even in extreme conditions.

## RF360



Microprocessor based ceiling mount PIR. Genuine quad element pyro ensures true omni-directional pick-up.

Texecom products are protected by UK and International patents, trademarks and registered design rights. *RF650*, *RFExtreme* & *RF360* are trademarks of Texecom Ltd.

UK Registered Design Nos. 2036936, 2036937, 2036938. UK Patent No. 2285915

© 1989 - 2004 Texecom Limited.

