

ADDM@RE

Wireless Keypad
KP700

INSTALLATION GUIDE

ERA

CONTENTS

1. INTRODUCTION

Introduction	1
Package Contents	1
Features	2

2. BEFORE USE

Power On	3
Connecting	4,5
Installation	5

3. SETTINGS

Enter setup state	6
Exit Delay	6,7
SOS key	7
Keyboard Tone	8
RFID reader setting	8,9
Direct disarm by RFID tag	9,10
Change user code	10,11
Change admin code	11
Reset	11

4. USAGE

Arm	12
Disarm	12,13
Stay mode	13
Emergency Call	14
Mute Mode	14

5. NOTICES

& MAINTENANCE

Usage notices	15
Maintenance	15

6. FAQ

16

7. INSTRUCTIONS OF WIRED CABLES INTERFACE

17

8. SPECIFICATIONS

17

1.INTRODUCTION

Thank you for purchasing this wireless keypad.

This can be installed inside or outside the home and allows the user to arm, disarm alarm after inputting passcode.

This keypad can also connect to an automatic door lock.

KIT CONTENTS

Keypad x 1

AAA 1.5V battery x 3

Screws x 4

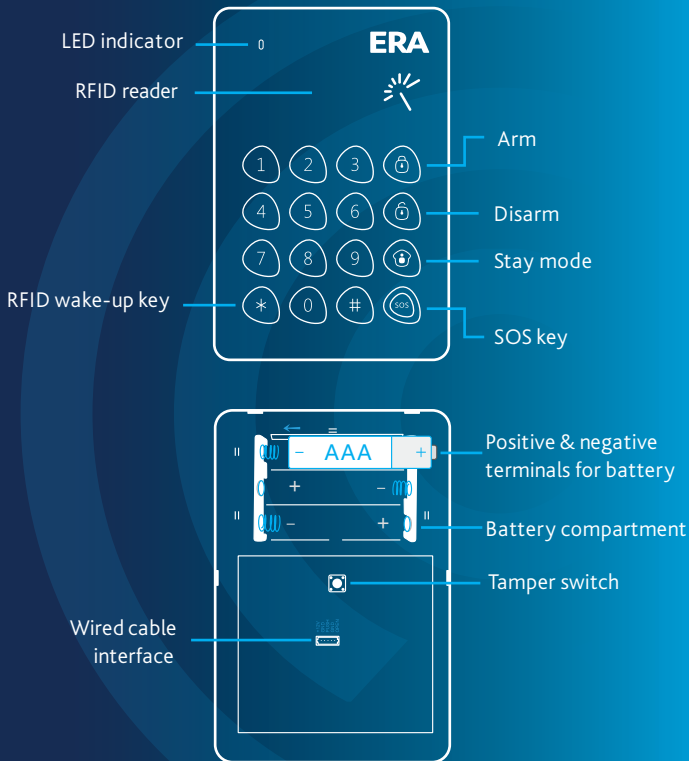
Manual x 1

Wired cable x1

Note: RFID tags (125KHz) can be purchased separately. Max. 50 pieces are supported.



FEATURES

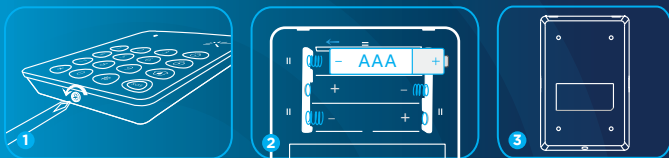


Note: The keypad beeps twice every two seconds & LED indicator flashes once in case of low battery.

2. BEFORE USE

POWER ON

Remove the insulating strip for the first time.
Keypad uses 3x AAA batteries.



- 1 Loose the screw, open the case
- 2 Put batteries in according to the positive and negative signs.
- 3 Close the rear cover and screw on.

Note: Opening the rear cover of keypad will trigger the tamper switch, please dismiss the alarm by following the disarm instruction (page 12)

When connected with electronic door lock as an access control, keypad is suggested to use the specific power supply for access control.

To know connection steps, please refer to the instruction manual of electronic door lock. The electronic door lock and specific power supply for access control should be purchased respectively.

CONNECTING

CONNECTING KEYPAD TO CONTROL PANEL

Make sure the control panel is in connecting state, input user code ❶ or admin code ❷ on keypad, and then press any key of [Arm] [Disarm] [Stay Mode]. The connection succeeds after one beep.

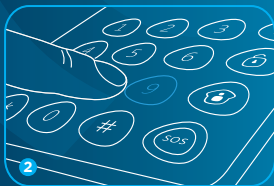
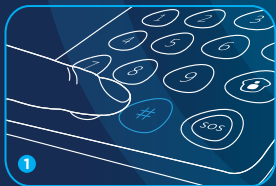


- ❶ Default User Code: 1234
- ❷ Default Admin Code: 123456

User can remotely control the panel via the keypad after connection; for detailed connection steps, please refer to the user manuals of panels.

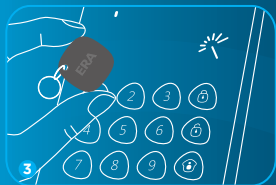
Note: If the control panel beeps twice when connecting, it means the keypad has already connected with the panel.

CONNECTING KEYPAD TO PERSONALISED TAG (RFID)



- ❶ Input [admin code + #] to wake up keypad.
Three beeps mean wrong input.
- ❷ Press [9], one beep is heard and the LED indicator is on. Keypad enters learning state.

Note: Wrong input for 6 times continuously, the keypad will be locked for 20 seconds.



- Put RFID tag close to the RFID reader, the connection succeeds after one beep and the LED indicator goes out.

If two beeps are heard, it indicates the RFID tag has been connected before.

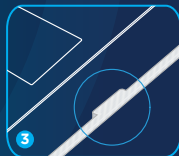
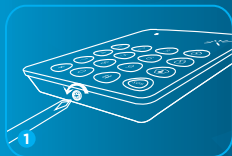
To clear the connection of RFID tags, input [admin code + #] to wake up the keypad and then press down [9] for six seconds. RFID tags are all cleared after one beep.

CONNECTING ELECTRONIC DOOR LOCK

Please refer to the instruction manual of electronic door lock.

INSTALLATION

Fix the keypad on the door frame or the wall before use.



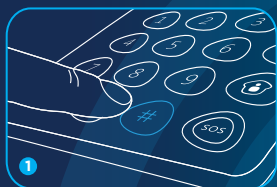
- Loose the screw, open the case
- Fix the rear cover on the door frame or the wall by screws
- Fasten the front cover of keypad on the rear cover. Secure two covers into place and then screw on

Note: Opening the rear cover of keypad will trigger tamper switch, please dismiss the alarm by following the disarm instruction (page 12)

3.SETTINGS

The keypad should enter setup state before all settings.

ENTER SETUP STATE



- 1 Input [admin code + #] to wake up keypad.
- 2 Press [3] to enter setup state, the LED indicator is on.

Under setup state, if there is no operation within 10 seconds, the keypad will exit setup state automatically. You can also press [#] to exit.

EXIT DELAY

The exit delay allows time to leave after arming the system. After the delay time, if you are still at home, you may trigger an alarm.

This setting does not apply to Stay Mode.

If the delay time of both control panel and keypad are set delay time respectively, the actual delay time is the total of both times.



Enter setup state, input:

*2*delay time*

When one beep is heard and the LED indicator keeps on for 10 seconds, the setup is successful.

Once the delay time is set, when you arm the keypad, it will beep once every two seconds to remind you to leave. The reminding rhythm will speed up in the last 15 seconds. After the delay time, the control panel enters arm state.

Note: User can input digital 0-250 which refers to 0-250 seconds.
Default setting: 0, no delay.

SOS KEY

You can choose to input code before pressing [SOS] key or not. This function is to prevent false operation or trick.

NOT INPUT CODE FOR SOS



Enter setup state, input:

*3*0*

When one beep is heard and the LED indicator keeps on for 10 seconds, the setup is successful.

ENABLE CODE SOS



Enter setup state, input:

*3*1*

When one beep is heard and the LED indicator keeps on for 10 seconds, the setup is successful.

Note: Default setting: 0, Code SOS is disabled.

KEYBOARD TONE

Keyboard tone can be turned on or off.
If it is off, the successful setup tone will be closed too.

TURN OFF KEYBOARD TONE



Enter setup state, input:

*4*0*

When one beep is heard and the LED indicator keeps on for 10 seconds, the setup is successful.

TURN ON KEYBOARD TONE



Enter setup state, input:

*4*1*

When one beep is heard and the LED indicator keeps on for 10 seconds, the setup is successful.

Note: Default setting: 1, turn on the keyboard tone.

RFID READER

DISABLE RFID READER



Enter setup state, input:

*5*0*

When one beep is heard and the LED indicator keeps on for 10 seconds, the setup is successful.

ENABLE RFID READER



When one beep is heard and the LED indicator keeps on for 10 seconds, the setup is successful.

Press [*] on the keypad and then disarm the system by RFID tag after this function was enabled.

DISARMING SILENTLY BY RFID TAG

The control panel and siren will hoot twice when disarming by RFID tag. If set disarming silently by RFID tag, the control panel and siren will keep silent to finish disarming without disturbing neighbourhood.



Note: Default setting: 1, turn on disarm by RFID tag and the siren will hoot when disarming.

DIRECT DISARM BY RFID

When direct disarm by RFID tag is enabled, users can directly present RFID tags to disarm the system and unlock the electrical door locks. However, the function consumes power greatly. It is recommended to disable the function, that is, the keypad is in sleeping state. Users need to press the [*] key before presenting RFID tags.

DISABLE DIRECT DISARM BY RFID TAG



Enter setup state, input:

*7*0*

When one beep is heard and the LED indicator keeps on for 10 seconds, the setup is successful.

ENABLE DIRECT DISARM BY RFID TAG



Enter setup state, input:

*7*1*

When one beep is heard and the LED indicator keeps on for 10 seconds, the setup is successful.

Note: Default setting: 0, disable the function of direct disarm by RFID tag.

CHANGE USER CODE

Using user code can wake up keypad, open electronic door lock, or send Arm, Disarm, Stay Mode commands to the control panel.

To avoid passcode reveal, please change user code when first time use.



Enter setup state, input:

*8*new user code*

When one beep is heard and the LED indicator keeps on for 10 seconds, the setup is successful.

Note: User code is 4 digits; default code is "1234".

CHANGE ADMIN CODE

Using admin code can wake up keypad, send Arm, Disarm, Stay Mode commands to the control panel, and also change any settings of the keypad.

To avoid passcode reveal, please change admin code for first time.



Enter setup state, input:

9*new admin code

When one beep is heard and the LED indicator keeps on for 10 seconds, the setup is successful.

Note: Admin code is 6 digits; default code is "123456".

RESET

△ After reset, the user code, admin code, and other settings will restore to default except that the connected RFID tags can still disarm and open electronic door lock.



Enter setup state, input:


0*

When one beep is heard and the LED indicator keeps on for 10 seconds, the setup is successful.

4.USAGE

Working with an alarm control panel, the keypad is more secure than the remote control. User code or admin code should be input before the operation of Arm, Disarm, Stay Mode, and Mute Mode.

ARM

Input user code or admin code, and press  key, the LED indicator flashes once and the keypad beeps once and sends [Arm] command to the control panel.



When the alarm panel receives the signal, the siren will beep once and the [Arm] indicator will light on. The alarm system enters armed state.

If there is an intrusion, the alarm system will be triggered, the siren will hoot and the control panel will send SMS and auto dial to pre-stored phone numbers to notify users. (SMS notification is applicable only for GSM alarm systems.)

DISARM

Users can disarm alarm system by using keypad or by using RFID tags.

USING KEYPAD TO DISARM

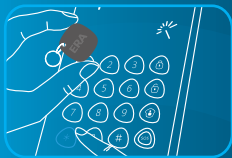
Input user code or admin code, and press  key, the LED indicator flashes once and the keypad beeps once and sends [Disarm] command to the control panel.



When the alarm panel receives the signal, the siren will beep twice and the Disarm indicator will light on, the alarm system enters disarmed state. In this state, the sensors being triggered will not cause an alarm.

USING RFID TAG TO DISARM

If direct disarm by RFID tag is disabled, user needs to press [*] to wake up the keypad and then put RFID tag close to the reader to disarm and unlock the door.



If direct disarm by RFID tag is enabled, user can put RFID tag close to the reader to disarm and unlock the door directly.

STAY MODE

Input user code or admin code, and press  key, the LED indicator flashes once and the keypad beeps once and sends [Stay Mode] command to the control panel.



When the alarm panel receives the signal, the siren will beep once and the [Stay Mode] indicator will light on, the alarm system enters stay mode state.

All the sensors in other zones are armed to prevent the intruder except that the motion detector in Home Mode Zone is disarmed, so that people can move freely at home.

EMERGENCY CALL

If not inputting code for SOS is set, user just holds the **sos** key for 3 seconds, the LED indicator flashes once, the keypad beeps once, and the control panel alarms immediately.



If inputting code for SOS is set, user needs to input user code or admin code before holding the [SOS] key for 3 seconds to send an alarm.

MUTE MODE

Mute mode means that the LED indicators of control panel flash, but the siren does not beep, to avoid disturbing the neighbourhood.



Input user code or admin code, and hold any key of [Arm] [Disarm] [Stay Mode] for 2 seconds, the LED indicator flashes once, the keypad beeps once and sends corresponding command to the control panel.

When the alarm panel receives the signal, the LED indicator lights on or off, but the siren does not beep.

5. NOTICES & MAINTENANCE

In order to avoid any harm to the users or others during usage and prolong the usage life, please abide by the following notices.

USAGE NOTICES

GENERAL INSTRUCTION
The keypad should be connected to control panel before use.
The power supply of keypad will probably impact on the transmitting distance of wireless signal.
The keypad can be powered by 3 pcs of AAA batteries, or wired by DC 12V.
The keypad is compatible for any our alarm system.
Please remove the battery insulating strip before use.
Do not press SOS key if there's no emergency to avoid disturbing the neighbourhood.
Check the keypad regularly to ensure the system works properly in case of emergency.
The keypad is neither waterproof nor moisture-proof, please install it in a shady, cool and dry place.
The case of keypad is made of ABS. Please keep it away from strong light to ensure the lifetime.
FORBIDDANCE
The keypad is non explosion-proof. Please keep it away from fire, flame sources.
Install the keypad away from objects such as heater, air conditioner, microwave oven etc, that produces heat or electric-magnetic.
FORBIDDANCE OF DECOMPOSITION
Take the keypad for disposal of recycling according to the local regulation.
Do not take apart the product if you are not a professional technician.

MAINTENANCE

You can get most dust or fingerprint off with a dry, soft cloth or tissue. If there is dirt on the keypad, please wipe the surface by a soft cloth with a little dilute alkaline detergent and then wipe again with a dry cloth.

6.FAQ

PROBLEM	CAUSE	SOLUTION
NO RESPONSE FROM KEYPAD	Low battery	Please change the battery
	The positive and negative terminals are reversed	Follow the right terminal direction and insert the battery again
	Keypad is locked by inputting wrong passcode continually more than 6 times	Keypad will be unlocked after non-operation for 20 seconds
KEYPAD CANNOT CONNECT TO CONTROL PANEL	No response from alarm panel	Make sure the alarm panel is powered on Make sure the alarm panel enters learning state
	Alarm panel beeps twice	Keypad has been learned
NO RESPONSE FROM THE CONTROL PANEL BY OPERATING ON KEYPAD	Keypad is not learned to control panel	Please connect the keypad to the control panel by following the instruction manuals
	Distance between keypad and control panel is too far	Please move the keypad to a distance where the control panel receives signal It's recommended to buy signal repeater to extend the distance
CANNOT DISARM BY RFID TAGS	The RFID tags are not learned to keypad	Please connect the RFID tag to control panel by following the instruction manual
	Disarm by RFID tag function is deactivated	Enter setup state and activate the function of disarm by RFID tag
	Direct disarm by RFID tag is disabled	Disarm after pressing [*] key
KEYPAD CANNOT BE PROGRAMMED	Keypad is not awake	Please input [admin code +#] to wake up the keypad
	Keypad doesn't enter setup state	Please input [admin code +#] and press [3] to enter setup state
KEYPAD CANNOT BE ARMED, DISARMED AND STAY IN SAFE MODE	Haven't input user code before operation	Please input the user code or admin code before operation

7. WIRED CABLES INTERFACE (L-R)

+12V (RED WIRE): Positive of power

GND (BLACK WIRE): Negative of power

PUSH (YELLOW WIRE): Signal output for electronic lock

GND (WHITE WIRE): Negative of power

OPEN (GREEN WIRE): Signal input for exit switch

8. SPECIFICATION

Power Supply	DC 12V (AAA 1.5V x 3 Pcs)
Static Current:	< 20uA
Transmitting Current:	< 24mA
Transmitting distance:	<80m (in open area)
Radio Frequency:	433.92MHz (\pm 75KHz)
Housing Material:	ABS Plastic
Operations Condition:	Temperature: -10°C ~ +55°C Relative Humidity: <90% (non-condensing)
Keypad Dimensions	135 x 90 x 15mm (L x W x H)
Weight	90g



**Customer Helpline:
0345 257 2500**

www.eraeverywhere.com

ERA Home Security Ltd
Valiant Way, Wolverhampton
West Midlands, WV9 5GB
email: support@eraeverywhere.com