

## Specifications

- Galvanised steel backbox
- Also available with 5 amp and 16 amp european socket (PG101 & PG102 only)
- Fixing clamps
- 13 Amp Socket (variant dependant)
- 20mm knockouts
- Accepts LJ6C data modules (variant dependant, modules sold separately)
- Available in Dark Grey or Black (i.e. PG001B = Black or PG001G = Grey)

## Dimensions

Diameter	140mm
Cutout:	127mm
Colours:	Grey / Black

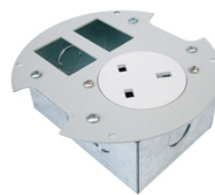
## Standard Power & Data Grommet Configurations



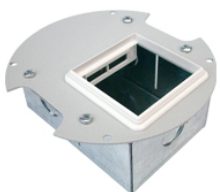
**PG001B / PG001G**  
13A Power Grommet  
(Round Socket)



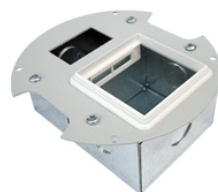
**PG002B / PG002G**  
13A Power Grommet + 1 Data  
(Round Socket)



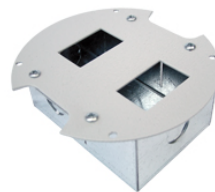
**PG003B / PG003G**  
13A Power Grommet + 2 Data  
(Round Socket)



**PG101B / PG101G**  
Euro Collar Grommet



**PG101B / PG101G**  
Euro Collar Grommet



**PG103B / PG103G**  
Data Grommet - 2 Data (LJ6C)



**Note:** All modules sold separately

**Disclaimer:** Due to our policy of continuous improvement, Tass Cable Management Ltd reserve the right to change product specifications without notice.