

aperta

APMON | COLOUR VIDEO DOOR ENTRY MONITOR



USER MANUAL



www.espuk.com





Contents

Monitor Functions	4
Installation	5
Dipswitch Settings	6
Monitor Operations	7



System Cabling

All system cabling (excluding mains 240vAC supply) has been tested with Cat5E UTP PVC cable.

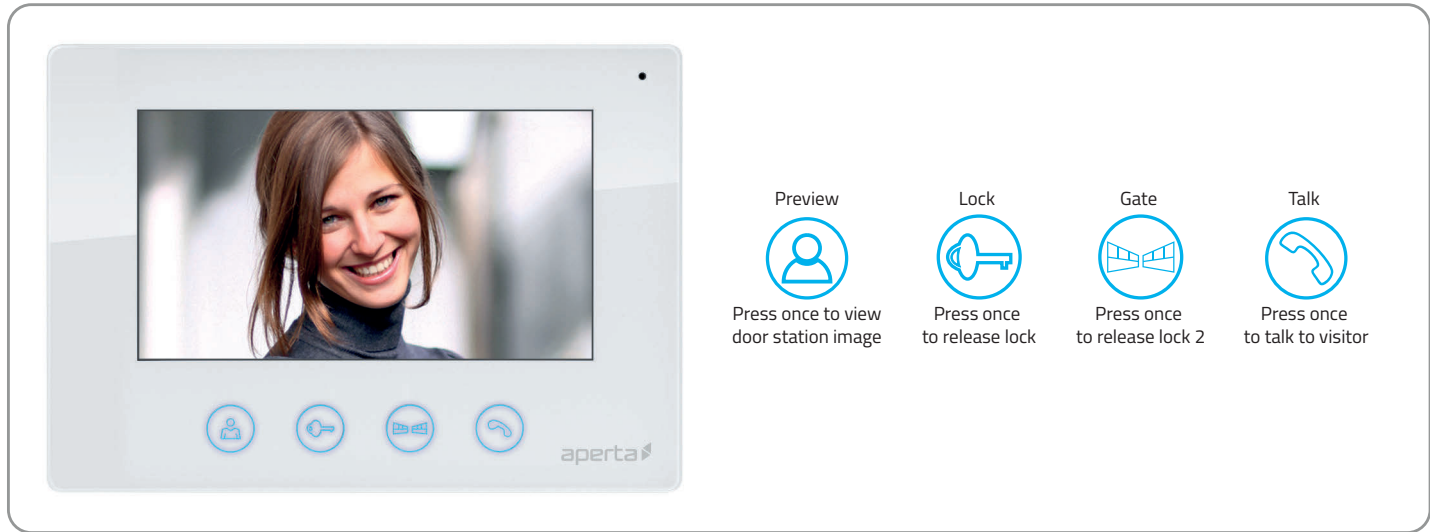


Part Number - A8NFORCE5EUTP

Find this product online:
elandcables.com | Cables & Accessories | LAN Cable | Cat 5E UTP PVC Cable



Monitor Functions



Preview



Press once to view door station image

Lock



Press once to release lock

Gate



Press once to release lock 2

Talk



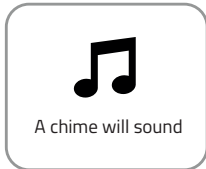
Press once to talk to visitor

A



The visitor presses the call button

B



A chime will sound

C



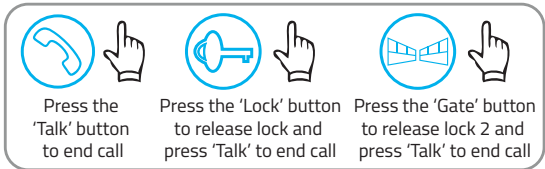
The visitor's image will appear on the monitor

D



Press the 'Talk' button and begin conversation

Then choose between these 3 options

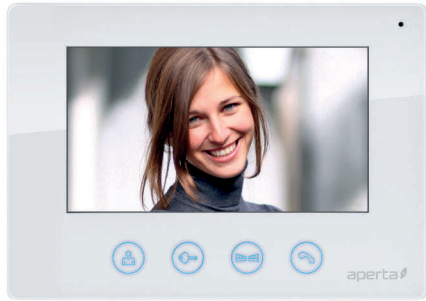


Press the 'Talk' button to end call

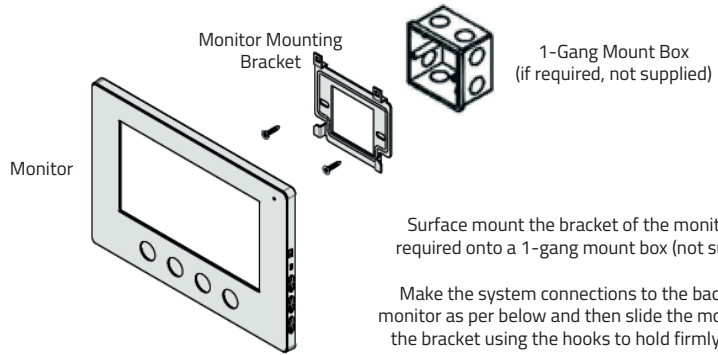
Press the 'Lock' button to release lock and press 'Talk' to end call

Press the 'Gate' button to release lock 2 and press 'Talk' to end call

Installation



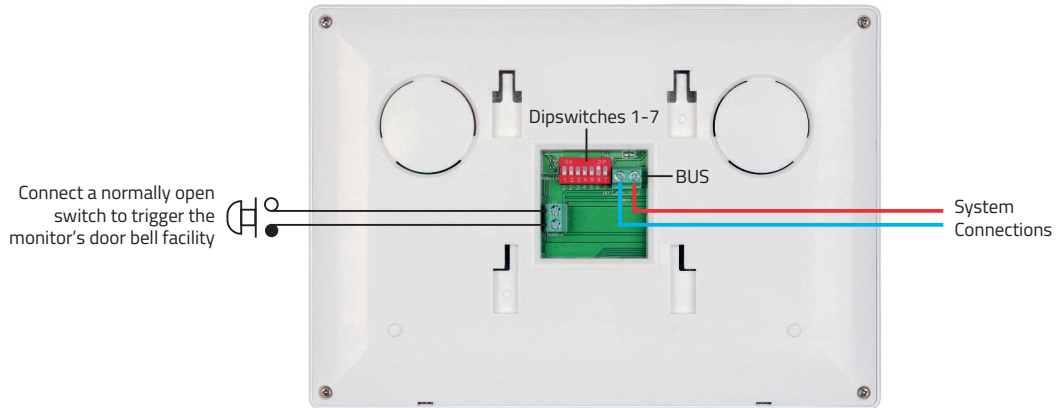
Site the indoor monitor to suit application.



Surface mount the bracket of the monitor or if required onto a 1-gang mount box (not supplied).

Make the system connections to the back of the monitor as per below and then slide the monitor onto the bracket using the hooks to hold firmly in place.

Rear View of Monitor



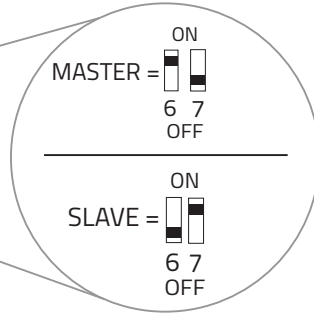
Dipswitch Settings

Rear View of Monitor

Master /Slave Setup Switch Setup

For villa system: Only 1 monitor is set as a MASTER.
All other monitors are set to SLAVE

For apartment system:
Each Address ID has 1 MASTER.
All other monitors on the same Address ID are set to SLAVE.



Address ID Switch Setup (only required for apartment systems)



Dipswitch Settings 1-5	Address ID of Monitor	Dipswitch Settings 1-5	Address ID of Monitor	Dipswitch Settings 1-5	Address ID of Monitor
	01		12		23
	02		13		24
	03		14		25
	04		15		26
	05		16		27
	06		17		28
	07		18		29
	08		19		30
	09		20		31
	10		21		32
	11		22		

Monitor Operations



Chime Volume: Slide switch for High, Medium and Low setting

Chime Selection: Press button to select chime melody

Monitor Brightness: Adjustment for brightness levels

Monitor Chroma: Adjustment for the intensity of colour

Talking Volume: Adjust the volume level of the monitor

Inner Call – Calling another monitor on the system or within same apartment



In standby mode



Press and hold the 'Talk' button for 5 seconds



All system monitors will ring



Once one Monitor has 'Talk' button pressed the inner call can begin



Elite Security Products
Unit 7, Target Park, Shawbank Rd
Lakeside, Redditch B98 8YN



Telephone: 01527 51 51 50
Fax: 01527 51 51 43
email: info@espuk.com

E&OE - Errors and omissions excepted. A16

www.espuk.com

